

moodydirect



& Shell

## ON SITE LUBRICATION SERVICE

Due to the ever increasing work load on food factory engineering functions, coupled with reduced staffing levels in the engineering departments, more and more traditional tasks are having to be contracted out.

In partnership with the technical support of Shell, we are now able to offer you the facility of a site survey to assess your complete plant lubrication requirements.

By prior arrangement a member of moody service department will carry out a full survey of items requiring oil level checks, oil changes and bearing greasing. Working in tandem with your planned preventative maintenance scheme a schedule of visits can be proposed to cover these needs.

You will then have the reassurance of knowing that all moving components in your processing environment will be receiving the attention they deserve for reliable operation.

Please contact us for further details on the above scheme.



moodydirect = Total Service



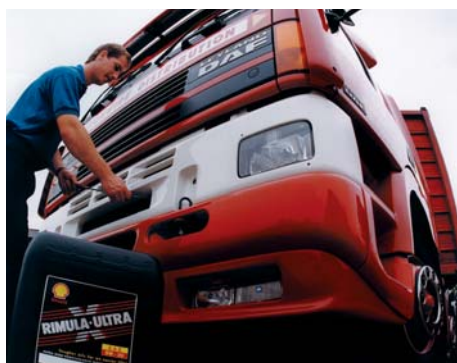
Moody Direct have been appointed an official Shell distributor to the food and beverage industry. Shell has one of the most recognised commercial logos in the world.

**Which Oil Do I Need?**

If you have a new requirement or are using a lubricant you are unhappy with, we will be delighted to assist your selection of the right product for your particular duty.

**You Need To Tell Us:**

- The Manufacturers Name, Make & Model
- The Manufacturers Recommended Lubricant or Specification
- Description Of Applications



REASONS WHY YOU SHOULD BE USING SHELL



Due to the superior quality of these lubricants their life is significantly prolonged, and as a consequence, oil changes less frequent. Staff time to actually do the work is costing you money, and disposal of waste oil is now a matter of legal obligation.



To make sure you are using the correct oil we are able to offer you the backing of Shell technical support. It may be that you are carrying in stock a large number of lubricants that can now be replaced by just one of the modern high specification types from Shell.